

# CLIP TECHNOLOGY IN SPRING LOADED CONTACTS

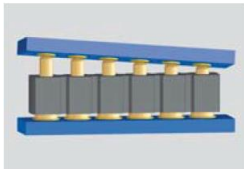


preci-dip

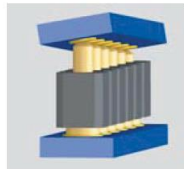
## SPRING LOADED CONTACTS

A flexible solution for your connections

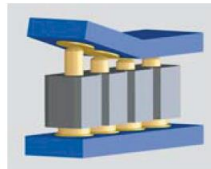
Spring Loaded **Contacts are really useful**: they facilitate blind mating requirements, are more tolerant to misaligned and non-coplanar mating conditions, and are capable of achieving up to one million mating cycles.



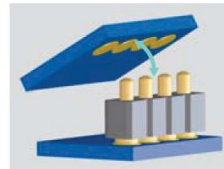
Accepts important positioning tolerances of the connectors



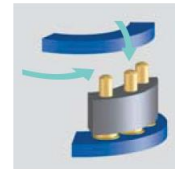
Connects surfaces non-perpendicular to



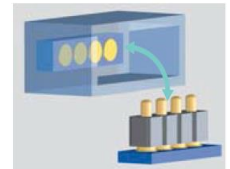
Compensates errors of parallelism and flatness



Connects pivoting or rotating elements



Connects with sliding mating action (push & lock)

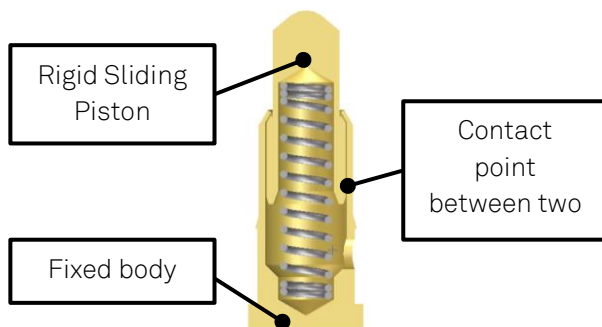


Suitable for blind mating

## STANDARD OR CLIP DESIGN

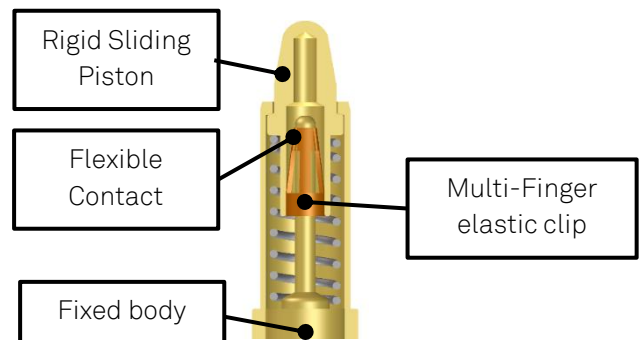
Comparison between two main technologies in spring loaded contacts

### Spring Loaded Contacts With Standard design



Rigid contact point will disconnect under shock and vibration conditions. This solution is only suitable in static-mode and low current applications.

### PRECI-DIP Spring Loaded Contacts With an Integrated CLIP



An integrated Multi-Finger elastic clip establishes a reliable and efficient multi point connection between body and piston. Flexible contact is compliant to shock and vibration up to 2000Hz or more, and currents up to 20A.

## MANY APPLICATIONS OF PRECI-DIP PATENTED CLIP TECHNOLOGY

### AERO



Docking station for control panels in aircraft.  
FIRST MATE/LAST

### MILITARY



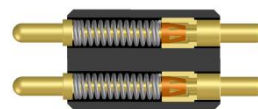
Interposer for military MANPACK RADIO  
1,27mm pitch

### MEDICAL



8 ways connector for respiratory devices

### AUTOMOTIVE



Board to board connection in automotive mirrors.

### INDUSTRIAL



Blind mating plug for industrial machinery  
6 signal 1A+ 2 power  
20A

PRECI-DIP SA Rue Saint-Henri 11 CH-2800 Delémont / Switzerland

PHONE +41 (0)32 421 04 00 FAX +41 (0)32 421 04 01 E-MAIL sales@precidip.com www.precidip.com