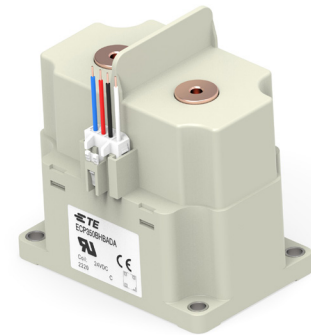


INTRODUCING HIGH VOLTAGE CONTACTORS ECP 150B / 250B / 350B SERIES UP TO 500 AMP

- High reliability in the sealing
- High performance in electrical endurance



TE Connectivity (TE) introduces the ECP150B / 250B / 350B series high-voltage DC contactor which is designed for control in high voltage environment in battery energy storage system, solar inverter and EV charging applications. It can be used in the 1500VDC voltage system and allow for bi-directional load. Hermetically sealed with ceramic sealing technology makes it safe and reliable.

BENEFITS

- High reliability in the sealing
- High performance in electrical endurance
- Low coil power consumption
- Small size for space saving
- Smart monitoring for main contact status
- Multiple approvals with UL, TUV, CE certification for customer projects

KEY FEATURE

- Hermetically sealed with ceramic technology with hydrogen filled
- Continuous carry current up to 500Amp
- Switching voltage up to 1500VDC
- Allow for bi-directional load
- Dual coil design with hold power 5.0W
- Equipped with auxiliary contact
- Comply with DC-1 utilization category
- Multiple approvals with UL, TUV, CE certification

APPLICATIONS

- Battery energy storage system
- Photovoltaic inverters
- EV Charging

ELECTRICAL

- Rated switch current: 150A, 250A, 350A
- Max switch voltage: 1500VDC

MECHANICAL

- Bottom mounted by flanged cover
- Lead wire length customize option available
- Size: 104mm × 75mm × 108mm

APPROVALS

- UL (UL60947-4-1)
- CE (IEC60947-4-1)
- TUV (IEC60947-4-1)

LEARN MORE

- [ECP 150B 250B 350B Series product page](#)
- [ECP 150B 250B 350B Series flyer](#)
- [ECP 150B 250B 350B Series partlist](#)
- [ECP 150B 250B 350B Series customer presentation \(English\)](#)
- [ECP 150B 250B 350B customer presentation \(Chinese\)](#)